



**SAY WHEN, SAY WHERE.
ON-SITE SKILLED TECHNICIANS.**

OUR PROMISE

**HIGHLY SKILLED
TECHNICIANS.**

**RAPID
RESPONSE.**

**DECREASED
DOWNTIME.**

A common challenge in manufacturing is not having enough skilled technicians on staff to flex with production needs.

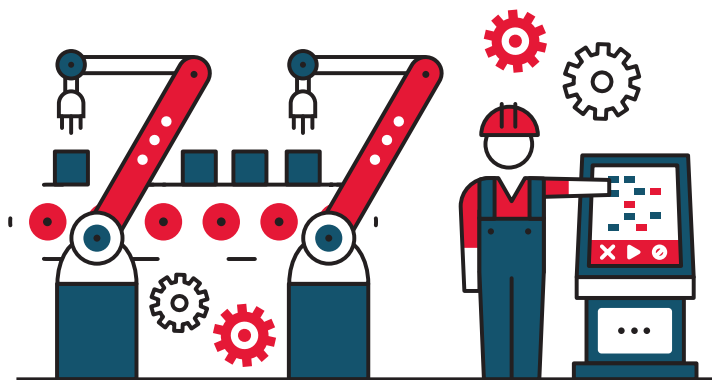
The industry is constantly faced with competition, cost constraints and the imminent skills gap. Manufacturers need a partner with a reliability mindset they can rely on to deliver a rapid response to their urgent needs.

To ensure your factory stays up and running, ATS offers on-site supplemental machine maintenance support - when and where you need us. Our experienced and highly skilled maintenance technicians can help you handle a surge in production or a short-term maintenance project that spans across a department or the entire plant. Or there may be need for additional

coverage, because one or more of your maintenance technicians is on vacation, medical leave, or you have an unfilled open position. Whatever the reason, ATS can help fill the gaps.

As a leader in industrial maintenance, technology, and parts since 1985, we have the standards, expertise and track record in providing the highest level of service and safety to our customers. We provide the services you need to optimize your production equipment through reduced downtime, higher productivity and greater return on assets.

Through our large regional and national team, we are able to fulfill your short and/or long-term maintenance needs. ATS has a team of skilled technicians, control engineers, maintenance planners/schedulers, material specialists, crib attendants and machine operators ready to support the needs of your manufacturing plant.



Source: Taking charge: Manufacturers support growth with active workforce strategies | Deloitte Insights, 2024

PROVEN EXPERIENCE IN MAKING FACTORIES RUN BETTER

No matter the job, our skilled workforce in maintenance and reliability excellence is here to help you discover the value and potential in your production assets.



MAINTENANCE SUPPORT

Maintenance teams must be equipped with the systems and processes to enable work in today's lean and fast-paced manufacturing environment. Preventive/predictive maintenance, equipment maintenance plans, CMMS systems, planning and scheduling strategy, and critical spares are keys to maintenance efficiency and effectiveness.



PRODUCTION OPERATORS

ATS knows how to resolve your equipment challenges — including a lack of qualified and hard-to-find operators. ATS has a reliable workforce that can both maintain and operate your equipment. As a one-stop resource, we can ensure that your critical machines will be online and producing — even your older and more maintenance-intensive assets.



STOREROOM OPTIMIZATION

Ensure your maintenance team has the right parts when and where they need them. Our storeroom optimization services help streamline inventory, reduce spend and improve part tracking—allowing your operations to stay efficient and responsive to demand. With expert on-site support, we implement best practices to increase accuracy, eliminate waste and minimize downtime.



MACHINE HEALTH ASSESSMENT

Machine health assessments are the equivalent of a non-invasive physical for your machinery. An experienced ATS professional checks all major facets of your critical equipment to identify problem areas before they cause machine failures, low product quality, or wasteful scrap. This service is performed on critical or aging assets by identifying prioritized corrective actions and recovery recommendations.



PREVENTIVE MAINTENANCE OPTIMIZATION

A well-structured preventive maintenance strategy optimizes performance, reduces costs and maximizes uptime. ATS enhances this by using data-driven insights to refine schedules, prioritize key tasks and allocate resources efficiently, minimizing downtime and improving reliability. With a proactive approach, manufacturers can maintain continuous, efficient operations while extending asset lifespan.



MACHINE HEALTH MONITORING

Stay ahead of equipment failures with real-time machine health monitoring. Our sensor-driven technology continuously tracks critical asset performance, providing real-time alerts and prescriptive actions to prevent unplanned downtime. With expert analysis from the Reliability 360® Technology Center, we help optimize maintenance strategies, improve uptime and reduce costs—so your operations run smoothly and efficiently.



CONSULTATIVE SERVICES

Whether you need maintenance and reliability strategy development for a single asset or multiple plant locations, forge your path with an ATS maintenance and reliability expert. ATS has the knowledge, data, and best practices to assess and guide your efforts from the detail of a daily operator PM to the particulars of a multi-year enterprise maintenance strategy.

FOCUSED, YET FLEXIBLE ACROSS MULTIPLE INDUSTRIES

We are focused on ten key industries across the manufacturing spectrum. Yet we can adapt our expertise to serve new industries and their unique production assets and manufacturing environments.



AEROSPACE



AUTOMOTIVE



BUILDING
PRODUCTS



CPG



HEAVY
EQUIPMENT



METAL
PRODUCTS



PAPER & PULP



PHARMACEUTICAL &
MEDICAL DEVICES



POWER
DISTRIBUTION



TIRE & RUBBER





IT STARTS WITH WORLD-CLASS SAFETY



That's why it is the number one tenet of our cultural commitments. It serves as the foundation that we build from.

At ATS, safety goes beyond our industry-leading OSHA incident rate and regulatory compliance. Our Beyond Zero safety culture prioritizes best-in-class safety procedures and programs with overall employee well-being.

