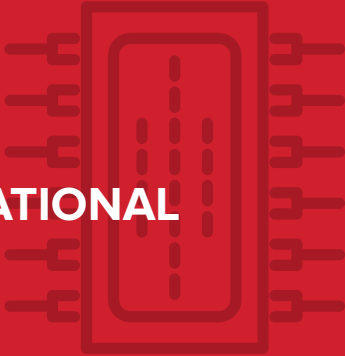




POWER DISTRIBUTION

## WE DRIVE OPERATIONAL PERFORMANCE



**Across the globe, day and night, there is a high demand for cost effective electrical power.**

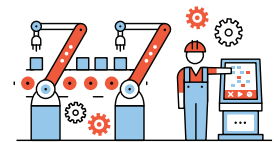
Increasingly automated factories, ever-expanding data centers, electric utilities serving growing populations and integrating alternative and distributed energy sources – all require safe, reliable, and efficient power distribution. Unplanned downtime is not just inconvenient, but extremely costly and inherently risky.

Manufacturers and operators of power distribution systems strive for high performing, resilient solutions that enable sustainable, quality, and affordable load flow. Ensuring highly efficient and reliable equipment requires advanced maintenance practices. Predictive and proactive maintenance strategies are proven to minimize equipment failure and maximize uptime by enabling repairs and maintenance during carefully planned outages.

Though effective maintenance is vital, it is a non-core function of many businesses. For example, wire and cable manufacturers are more focused on throughput. Project-oriented electrical cabinet and component producers are concerned with order fulfillment. Utilities and data centers aim for scalability and customer satisfaction. Recruiting, training, and retaining skilled maintenance personnel – from reliability leaders and advanced controls engineers to technicians experienced with aging legacy equipment – is outside of their core competency.

Moreover, widening skills gaps are putting performance and production goals at risk. Retiring baby boomers are taking specialized knowledge with them and replacements are harder to find; technology transformation requires new and unique skill sets; and plant modernization requires transitional talent to manage the diversity in equipment age and complexity.

We are committed to solving these challenges. For 35+ years, ATS has supported industrial environments including power distribution using the latest reliability best practices. Our fully trained and deeply experienced technical workforce backed by our advanced technologies can deliver preventive and predictive maintenance, MRO parts management and related services, allowing you to prioritize maximizing operational performance and achieving your business goals.



**4.6 MILLION  
MANUFACTURING JOBS**

WILL NEED TO BE FILLED IN  
THE NEXT DECADE WITH A  
SHORTAGE OF AT LEAST

**2.4 MILLION SKILLED  
WORKERS\***

\*Deloitte 2018 Skills Gap in Manufacturing Study



## RELIABILITY IS A CHALLENGE. WE CAN HELP.

ATS offers a variety of solutions to meet your unique needs, from comprehensive maintenance to more tailored programs that provide skilled technicians to supplement and support your maintenance and reliability goals.

Our proven value comes from the combination of our technically skilled workforce, established processes and data-centric technologies to help manufacturers meet their business objectives.



### THE BEST TALENT

In today's competitive job market, we are a leading employer through our unique talent acquisition strategy that utilizes the latest tools, technologies and analytics to attract and hire the best people for your production environment. For our highly skilled technicians on staff, we provide market leading salaries, robust benefits and additional incentives that are unparalleled in the industry.



### A COMPETITIVE EDGE

ATS continually invests in the development of our technicians' expertise through a lab-based curriculum and the latest technologies in electronic and mechanical skill sets, plus advanced training in CNC, PLC, and robotics. Technicians also receive customized training to ensure they meet the needs of each customer's specific environment.



### WORLD-CLASS SAFETY

As a continuous improvement company, we are committed to achieving an injury-free workplace through our 'Live Safety 24/7' culture – prioritizing the importance of a safe environment for our employees and customers. This commitment has resulted in ATS having some of the lowest incident rates in the industry.



### SMART TECHNOLOGIES

We utilize the latest technologies through our Reliability 360 Center, from IIoT remote monitoring devices to various CMMS systems, including our proprietary eFactory Pro, to capture your data, analyze your equipment, and ensure smooth operation.