



**SAY WHEN, SAY WHERE.  
ON-SITE SKILLED TECHNICIANS.**

OUR PROMISE

**HIGHLY SKILLED  
TECHNICIANS.**

**RAPID  
RESPONSE.**

**DECREASED  
DOWNTIME.**

A common challenge in manufacturing is not having enough skilled technicians on staff to flex with production needs.

The industry is constantly faced with competition, cost constraints and the imminent skills gap. Manufacturers need a partner with a reliability mindset they can rely on to deliver a rapid response to their urgent needs.

To ensure your factory stays up and running, ATS offers on-site supplemental machine maintenance support - when and where you need us. Our experienced and highly skilled maintenance technicians can help you handle a surge in production or a short-term maintenance project that spans across a department or the entire plant. Or there may be need for additional

coverage, because one or more of your maintenance technicians is on vacation, medical leave, or you have an unfilled open position. Whatever the reason, ATS can help fill the gaps.

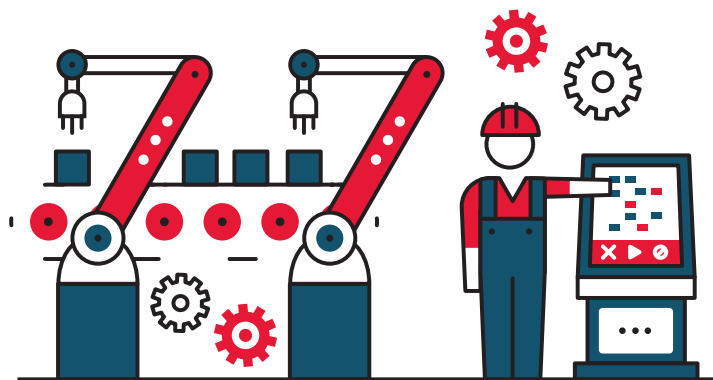
As a leader in factory maintenance for 30+ years, we have the standards, expertise and track record in providing the highest level of service and safety to our customers. We provide the services you need to optimize your production equipment through reduced downtime, higher productivity and greater return on assets.

Through our large team of skilled and well trained technicians, we are able to fulfill your short and/or long-term maintenance needs. Whether you need a maintenance technician experienced in PLC systems, robotic cells, high-speed continuous process or one proficient in troubleshooting multi-axis machining centers, ATS has a large team of knowledgeable technicians ready to support your plant needs.

## 4.6 MILLION MANUFACTURING JOBS

WILL NEED TO BE FILLED IN  
THE NEXT DECADE WITH A  
**SHORTAGE** OF AT LEAST

2.4 MILLION  
SKILLED WORKERS



\*SOURCE: DELOITTE 2018 SKILLS GAP IN MANUFACTURING STUDY

## PROVEN EXPERIENCE IN MAKING FACTORIES RUN BETTER

No matter the job, our skilled workforce in maintenance and reliability excellence is here to help you discover the value and potential in your production assets.



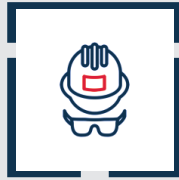
### MACHINE HEALTH ASSESSMENT

Machine health assessments are the equivalent of a physical for your machinery. An experienced ATS professional checks all major facets of your critical equipment to identify problem areas before they cause machine failures, low product quality, or wasteful scrap. This service is performed on critical or aging assets by identifying prioritized corrective actions and recovery recommendations.



### MAINTENANCE PROCESSES

Maintenance teams must be equipped with the systems and processes to enable work in today's lean and fast-paced manufacturing environment. Equipment maintenance plans, CMMS systems, planning and scheduling strategy, and critical spares are keys to maintenance efficiency and effectiveness. We are experts in the design, implementation, and refinement of maintenance processes to establish best practices at your plant for measurable and sustainable results.



### EQUIPMENT SAFEGUARDING

OSHA, ANSI, NFPA, & ISO specifications and standards can get you the best of you when trying to keep up, but nothing takes a back seat to the safety of your employees. Leave the safeguarding of equipment to certified machine safety experts – ATS. We objectively assess your asset safety, engineer and integrate safety guarding and controls, and reassess to ensure complete remediation of risk.



### AUTOMATION INTEGRATION

ATS automation integration can add years to the life of your manufacturing assets, resulting in increased ROI and higher profitability – all while keeping capital expenditures to a minimum. From HMI devices to robotics and all process control system upgrades in between, we can modernize your equipment according to your specific requirements, incorporating technologies as appropriate.



**CONSULTATIVE SERVICES**

Whether you need maintenance and reliability strategy development for a single asset or multiple plant locations, forge your path with an ATS maintenance and reliability expert. ATS has the knowledge, data, and best practices to assess and guide your efforts from the detail of a daily operator PM to the particulars of a multi-year enterprise maintenance strategy.



**SCADA & IIOT**

Whether your interest in SCADA and IIoT is in squeezing more throughput, monitoring critical processes, or becoming more predictive in your maintenance strategy, we are here in the place where maintenance, production, and engineering converge. ATS maintains a position on the edge of technology. You ask the critical questions about your factory data, we handle the clouds, protocols, hardware, and integrations.



**ADDITIONAL SERVICES TO SUPPORT YOUR NEEDS**



**TECHNICAL WORKFORCE SOLUTION**

Our Technical Workforce Solution is a best-in-class alternative to traditional external staffing or internal recruiting initiatives. As a partner in developing strategy and exceeding production objectives, we strengthen your operations with skilled technicians and on site technical supervisors at all levels of expertise and across multiple disciplines, fitting your required skillsets.



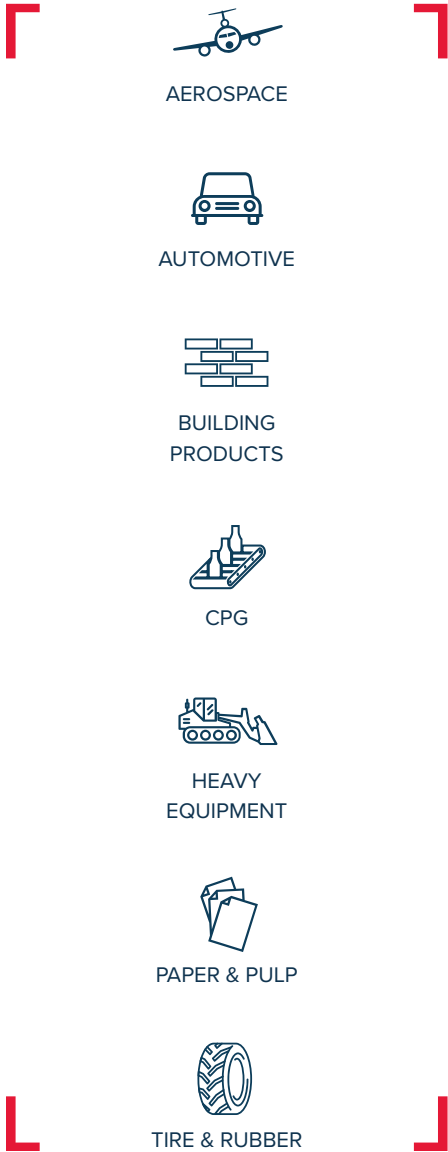
**COMPREHENSIVE MAINTENANCE SOLUTION**

Through our turnkey on-site approach to maintenance where we take full ownership of your maintenance process, ATS can optimize your production equipment, dramatically lowering your manufacturing costs and establishing standardized metrics for measurable results.



## FOCUSED, YET FLEXIBLE ACROSS MULTIPLE INDUSTRIES

We are focused on **seven key industries** across the manufacturing spectrum. Yet we can adapt our expertise to serve new industries and their unique production assets and manufacturing environments.





## IT STARTS WITH WORLD-CLASS SAFETY



That's why it is the number one tenet of our cultural commitments. It serves as the foundation that we build from.

And as a continuous improvement company, we are committed to achieving an injury-free workplace through our 'Live Safety 24/7' culture – prioritizing the importance of a safe environment for our employees and customers.

