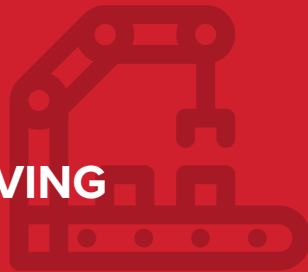




BUILDING PRODUCTS

WE KEEP PRODUCTION MOVING

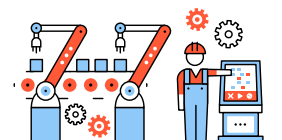


The United States represents the world's largest market for building products, so industry manufacturers need their equipment operating at peak performance to meet tight production schedules and full performance targets. In most plants, performance is measured on equipment utilization and overall equipment effectiveness (OEE). If a factory's maintenance program doesn't meet its requirements, reliability and plant performance suffer. According to analyst firm Aberdeen Research, estimated downtime and scrap can cost a manufacturer thousands of dollars per hour.

In highly electronic and mechanical environments found in building products, the downtime of a failed machine can significantly impact delivery, quality and cost of production. To combat this, factories need a maintenance program executed by skilled technicians to ensure reliability and plant performance stay at peak efficiency.

Solving the widespread industry challenge of finding top-tier technical talent in manufacturing has also never been more difficult. A high degree of strategic planning and expertise in the area of industrial maintenance performance is required when looking to successfully recruit, train and retain a highly skilled technical workforce.

We understand that executing reliability programs to increase uptime and lower costs can be challenging. As a 30+ year leader of industrial maintenance services for many building products manufacturers, ATS has the specialized expertise to reduce maintenance costs, increase operational efficiency, and accelerate reliability. We excel at delivering measurable and sustainable results for key performance metrics. It's at our core and we're ready to put it to work for you.



4.6 MILLION
MANUFACTURING JOBS

WILL NEED TO BE FILLED IN
THE NEXT DECADE WITH A
SHORTAGE OF AT LEAST
**2.4 MILLION SKILLED
WORKERS**



RELIABILITY IS A CHALLENGE. WE CAN HELP.

ATS offers a variety of solutions to meet your unique needs, from comprehensive maintenance to more tailored programs that provide skilled technicians to supplement and support your maintenance and reliability goals.

Our proven value comes from the combination of our technically skilled workforce, established processes and data-centric technologies to help manufacturers meet their business objectives.



THE BEST TALENT

In today's competitive job market, we are a leading employer through our unique talent acquisition strategy that utilizes the latest tools, technologies and analytics to attract and hire the best people for your production environment. For our highly skilled technicians on staff, we provide market leading salaries, robust benefits and additional incentives that are unparalleled in the industry.



A COMPETITIVE EDGE

ATS continually invests in the development of our technicians' expertise through a lab-based curriculum and the latest technologies in electronic and mechanical skill sets, plus advanced training in CNC, PLC, and robotics. Technicians also receive customized training to ensure they meet the needs of each customer's specific environment.



WORLD-CLASS SAFETY

As a continuous improvement company, we are committed to achieving an injury-free workplace through our 'Live Safety 24/7' culture – prioritizing the importance of a safe environment for our employees and customers. This commitment has resulted in ATS having some of the lowest incident rates in the industry.



SMART TECHNOLOGIES

We utilize the latest technologies, from IIoT remote monitoring devices to various CMMS systems, including our proprietary eFactory Pro, to capture your data, analyze your equipment, and ensure smooth operation.