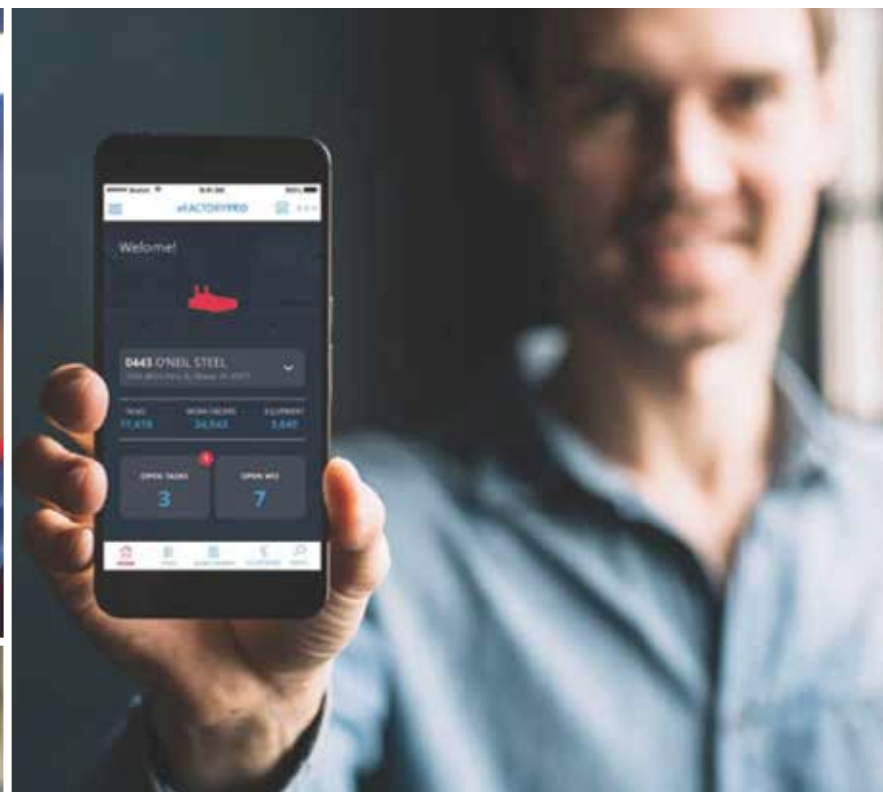




ADVANCED TECHNOLOGY SERVICES, INC.



WE MAKE FACTORIES
RUN BETTER



A MESSAGE FROM OUR CEO




For three decades,

I have been proud to call ATS my home and that is exactly how I view the organization, my home and my family. A lot has changed over the years, but one thing has remained consistent – We Make Factories Run Better.

Our combination of advanced monitoring capabilities and predictive analytics set us apart as a holistic, technology-driven maintenance services partner. Add to this our world-class leadership and skilled workforce, and we have the people, processes and technologies to deliver optimized reliability that is unmatched in the industry. Our people are truly the heart and soul of ATS and go above and beyond every day to support our customers - often driving not only measurable operational improvements, but positive cultural changes as well.

At every level of our organization, we take great pride in creating long term partnerships with our manufacturing clients. Our continuous improvement culture delivers the operational efficiencies manufacturers need to decrease downtime, meet production goals and reduce costs.



JEFF OWENS

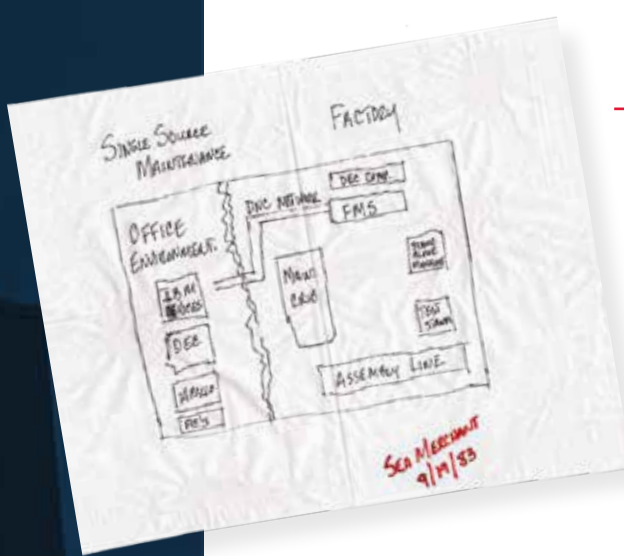
Chief Executive Officer

RELIABILITY IS OUR CORE

With a history rooted in continuous improvement and a future driven by technology, Advanced Technology Services, Inc. (ATS) is a leading global solutions provider with over three decades of proven experience in reliability-centered industrial maintenance and MRO asset management.

Through our technically skilled workforce, standardized processes and industry 4.0 technologies we deliver asset health and productivity to many of the world's leading process and discrete manufacturers.

ATS



We began as
an idea on
a napkin in
1983

36

Years of
Proven
Experience

5

Corporate
Locations in
3 Countries

3,600

Global
Employees

80K+

Critical
Assets
Managed

**Our
Mission**

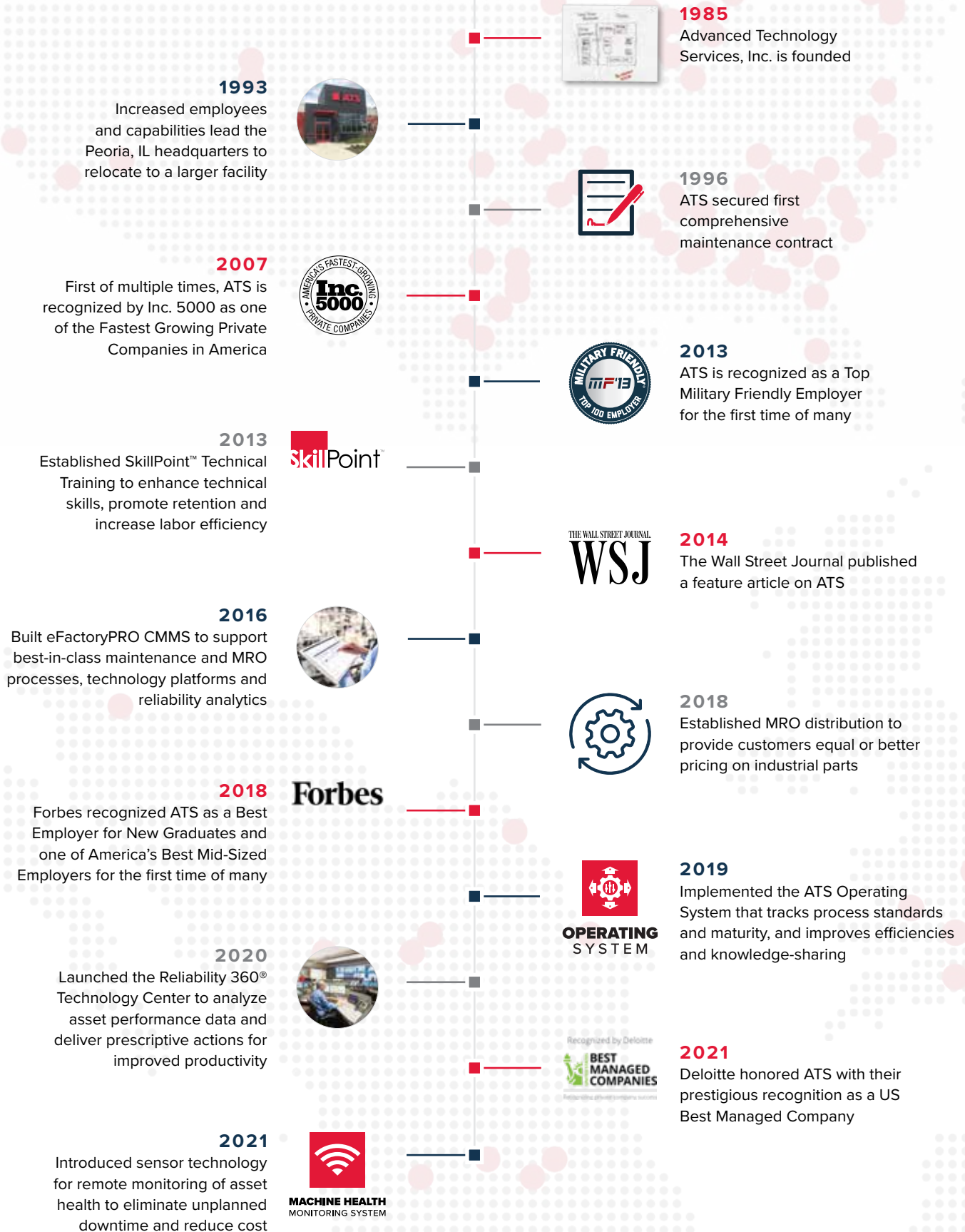
WE MAKE FACTORIES RUN BETTER

**Our
Culture**

**ATS IS, AND ALWAYS WILL BE,
A PEOPLE COMPANY.**

Our culture is built on four foundational pillars –
Live Safety, Value Employees, Engage Customers,
Drive Results – on which every employee works
to build upon through ownership of their personal
well-being and professional development.

MILESTONES





ATS

Our Culture



LIVE SAFETY



Our foundation is safety and personal well-being. We think it, feel it, and live it every day.



VALUE EMPLOYEES



Our employees are what make our company great. We respect and trust each other and communicate openly.



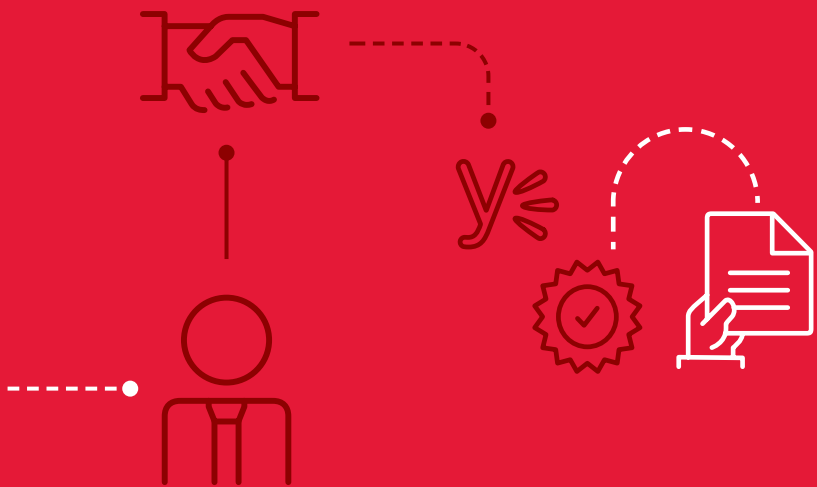
- Think it through, talk it out, and openly communicate.
- Follow processes and procedures.
- Talk with your team to build a welcoming & collaborative environment.



DRIVE RESULTS



Our commitment to making factories run better through excellent service and continuous improvement drives prosperity for our company and families.



- Seek to understand; communicate to be understood.
- Celebrate all wins.
- Encourage one another to promote a strong team environment.



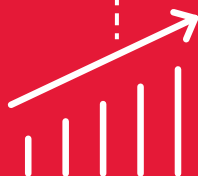
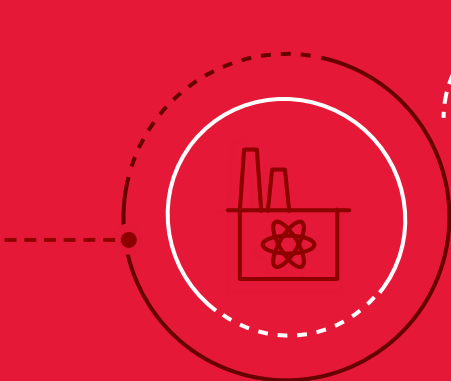
ENGAGE CUSTOMERS



Our customers are our partners.
Their success is our success.



- Connect and build partnerships.
- Align and exceed expectations.
- Be an ambassador of your customers and their markets.
- Take pride in your work.



- Collaborate: together, everyone achieves more.
- Leverage strengths to create solutions and remove barriers.
- Go above and beyond.
- Drive continuous improvement.

FOCUSED, YET FLEXIBLE ACROSS MULTIPLE INDUSTRIES

We are focused on eight key industries across the manufacturing spectrum. Yet we can adapt our expertise to serve new industries and their unique production assets and manufacturing environments.



AEROSPACE



AUTOMOTIVE



BUILDING
PRODUCTS



CPG



HEAVY
EQUIPMENT



PAPER & PULP



POWER
DISTRIBUTION



TIRE & RUBBER



IT STARTS WITH WORLD-CLASS SAFETY



That's why it is the number one tenet of our cultural commitments. It serves as the foundation that we build from.

At ATS, safety goes beyond our industry-leading OSHA incident rate and regulatory compliance. Our Beyond Zero safety culture prioritizes best-in-class safety procedures and programs with overall employee well-being.

SAFETY EXCELLENCE

ATS averages

73% LOWER

recordable incident rates
than industry standards



LIVE SAFETY 24/7

Our foundation is safety and personal well-being. We think it, feel it, and live it every day.



FINANCIAL WELL-BEING

Having financial security and peace-of-mind now and in the future.



PHYSICAL WELL-BEING

Improving health through proper diet, regular exercise habits and annual wellness exams.



SOCIAL WELL-BEING

Embracing the culture of our workplace and community, giving back through volunteerism and doing our part to protect the environment.



EMOTIONAL WELL-BEING

Enabling people to realize their full potential, cope with the stresses of life, work productively and make meaningful contributions to their communities.

“

“I would recommend ATS to any manufacturer that doesn’t have a good, structured maintenance program. Their commitment to employee and workplace safety is aligned to ours through a well-defined scope.”

”

- Leading Global Manufacturer

OPERATING SYSTEM

SAFETY

Drives Behavior-Based Culture

- Safety Training and Education
- Hazard Evaluation and Control
- Incident Investigation
- Employee Involvement and Ownership
- Periodic Evaluation Process

PEOPLE

Promotes High Engagement

- Performance Boards Drive Dialog
- Steering Teams Drive Ownership
- Standard Work Build Competence
- Unifies Teams and Supports Leaders
- Improves Culture

PROCESS

Drives Behavior-Based Culture

- Action Planning and Execution
- System Accountability Measures
- Root Causes and Analysis
- CI and Knowledge Share Programs
- Standard Work and Execution Management

TECHNOLOGY

Provides Data-Driven Results

- Basic Care and Maintenance Fundamentals
- Equipment Condition Monitoring
- Failure Elimination
- Lubrication Excellence
- Equipment-Specific Maintenance Plans



“

“ATS does a great job of understanding the customer’s needs and that trickles down throughout the organization. 110% satisfied with their professional presence, attitude and delivery.”

”

- Leading Global Manufacturer





