

**PARTS REPAIR SERVICE**

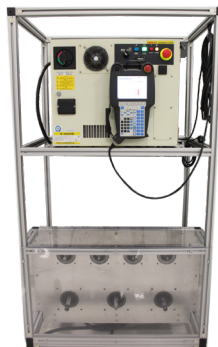
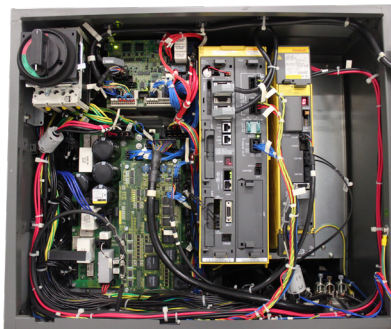
# FANUC ROBOTICS

## R30iB ROBOTIC CONTROL

The Fanuc R30ib controller is the next generation of Fanuc Robotic controls that ATS supports. The Fanuc R30ib uses high performance hardware and has the latest advances in network communications. The R30ib controller includes the new touch screen enabled iPendant for easy use and programming.

Part numbers we repair include:

- A06B-6400-H101
- A06B-6400-H102
- A06B-6400-H002
- A06B-6400-H003
- A06B-6400-H004
- A06B-6400-H005
- A05B-2601-C412
- A16B-2203-0910
- A20B-2102-0050
- A20B-2200-0650
- A05B-2255-H105 #SGN
- A05B-2255-H105 #JMH
- A05B-2255-H105 #ESW
- A05B-2255-H105 #ESL
- A05B-2255-H105 #EMH
- A05B-2255-H105 #EGN
- A05B-2255-H101 #EAW
- A05B-2255-H101 #SGL
- A05B-2600-C001
- A16B-3200-0780
- A16B-3200-0780
- A20B-2004-0380
- A20B-2101-0730
- A06B-6240-H101
- A06B-6240-H103
- A06B-6240-H104
- A06B-6240-H105
- A06B-6240-H106
- A06B-6240-H201
- A06B-6240-H205
- A06B-6240-H206
- A06B-6240-H207
- A06B-6240-H208
- A06B-6240-H209
- A06B-6240-H210
- A06B-6240-H211
- A06B-6240-H301
- A06B-6240-H305
- A06B-6240-H308



**OUR CORE**



PLC & CNC CONTROLS



ROBOTICS & AUTOMATION



BATCH MIXING



EQUIPMENT & TOOL CALIBRATION



PROCESS EQUIPMENT



CONVEYOR/MATERIAL HANDLING

**OUR REPAIR SERVICE INCLUDES:**

- + A 40-60% cost savings versus buying new
- + Comprehensive cleaning and inspection prior to repair
- + Identification and replacement of defective components
- + Proactively perform preventative maintenance
- + Full functional testing – your part is returned, ready to run
- + Detailed service report to help you identify repetitive failures
- + Standard 7-10 day lead time or rush option, same day – 48 hours
- + 1-year in service warranty from installation date; 5-year shelf warranty

**24/7 LIVE ASSISTANCE**

[repair@advancedtech.com](mailto:repair@advancedtech.com)

800.328.7287



# Top OEM's We Repair

We offer quality electronic and mechanical parts repair and calibration services for 1,000+ OEM brands at our state-of-the-art, ISO 9001 & ISO 17025 accredited facilities.

- ABB GROUP
- ADVANTECH AUTOMATION
- ALLEN BRADLEY  
(ROCKWELL AUTOMATION INC)
- BALDOR-RELIANCE  
(BALDOR ELECTRIC CO)
- BOSCH REXROTH AG
- CINCINNATI MILACRON INC (FERROMATIK  
MILACRON INDIA PVT LTD)
- CONTROL TECHNIQUES  
(EMERSON ELECTRIC CO)
- DURBIN INDUSTRIAL VALVES
- EATON CORP
- EUROTHERM DRIVES LTD
- FANUC AMERICA CORP
- FINCOR AUTOMATION  
(EMERSON ELECTRIC CO)
- FIREYE INC (UNITED TECHNOLOGIES)
- FIVES NORTH AMERICAN COMBUSTION INC  
(SIMPLEX)
- FLUKE CORP
- FUJI ELECTRIC CORP
- GENERAL ELECTRIC CO
- GSE
- HEIDENHAIN CORP
- HONEYWELL INTL INC
- INDRAMAT PRODUCTS  
(REXROTH INDRAMAT GMBH LTD LIAB CO)
- ISHIDA CO
- KOLLMORGEN (DANAHER CORP)
- LINCOLN ELECTRIC
- MARPOSS SPA
- MAZAK CORP
- METTLER TOLEDO INTL INC
- MITSUBISHI ELECTRIC CORP
- MODICON (SCHNEIDER ELECTRIC)
- MOOG INC
- MOTOMAN (YASKAWA)
- OKUMA AMERICA CORPOMRON ELECTRONICS  
LLC
- PARKER HANNIFIN CORP
- PROPORTION-AIR INC
- RELIANCE ELECTRIC CO
- SICK AG
- SIEMENS AG
- SPX CORP
- STARRETT
- STI (OMRON SCIENTIFIC TECHNOLOGIES INC)
- TECO-WESTINGHOUSE MOTOR CO
- TELEMECHANIQUE  
(SCHNEIDER ELECTRIC)
- WAUKESHA (SPX CORP)
- WEBER
- WESTINGHOUSE ELECTRIC CORPORATION
- YASKAWA AMERICA INC
- ZEBRA TECHNOLOGIES CORP (ZIH CORP)